



Institute for  
Research on  
Public Policy

Institut de  
recherche  
en politiques  
publiques

For immediate distribution – June 30, 2010

## NEWS RELEASE

### *Majority of Canadians strongly support immigration But poll finds Canadians don't want immigration levels increased*

**Montreal** – While most Canadians think that immigration is a positive feature and that it is good for the country, they also believe immigration levels should be maintained at the current level or reduced, according to the latest Nanos Research poll for *Policy Options*, the monthly magazine published by the Institute for Research on Public Policy.

“These conflicting findings might appear counterintuitive, however, they are logically consistent with the current economic cycle,” says pollster Nik Nanos, president and CEO of Nanos Research, a national public opinion research firm based in Ottawa. “In the present economic cycle, coming out of a severe recession, Canadians are more supportive of the status quo. In other words, immigration is a good thing, but we don’t want too much of a good thing.”

The poll found that four Canadians in five agree (65.3 percent) or somewhat agree (16.1 percent) that immigration is “a key positive feature of Canada as a country.” About one Canadian in six disagrees (11.8 percent) or somewhat disagrees (4.2 percent) with this statement. But, when asked if immigration levels should be increased, decreased or maintained at present levels, Canadians are much more ambivalent. Only one in five (21.4 percent) believes immigration levels should be increased, while nearly four in 10 (38.9 percent) believe present levels should be maintained. One in three (32.4 percent) believes immigration levels should be decreased.

Canadians also have a high degree of sympathy for the challenges immigrants encounter when relocating to a new country. Nearly two in three Canadians polled agree (45.8%) or somewhat agree (19.9%) that governments should do more through language and labour market support to help immigrants settle in Canada.

“Overall the results of this poll are very positive on immigration and related issues, subject only to the caution that, in difficult times, such as those we have recently experienced, Canadians generally do not have an appetite for immigration levels to be increased,” notes Nanos.

The random telephone survey was conducted with 1,008 Canadians between May 29 and June 3, 2010. The margin of accuracy is 3.1 percentage points, plus or minus, 19 times out of 20.

The poll, in the July-August issue of *Policy Options*, can be downloaded free of charge from the Institute's Web site ([www.irpp.org](http://www.irpp.org)).

-30-

For more details or to schedule an interview, please contact the IRPP.

To receive our monthly bulletin *Thinking Ahead* via e-mail, please subscribe to the IRPP e-distribution service by visiting our Web site.

**Media Contact:** Kate Shingler      Tel: 514-787-0737      Cell: 514-235-8308



## NANOS – POLICY OPTIONS IMMIGRATION POLL

Question 1 – In 2008, Canada admitted 247,202 permanent immigrants. Do you think Canada should increase, decrease, or keep the same number of new permanent immigrants each year?

		Total	Increase number	Decrease number	Same number	Unsure
		Responses	Percentage	Percentage	Percentage	Percentage
Region	Canada 2010-06	1008	21.4	32.4	38.9	7.3
	Atlantic	97	26.0	22.5	35.8	15.7
	Quebec	251	17.1	29.6	49.3	4.0
	Ontario	300	19.4	38.6	35.3	6.8
	Prairies	214	22.1	31.0	38.2	8.7
	British Columbia	145	29.2	33.1	31.4	6.4
Gender	Male	507	23.9	28.8	40.5	6.8
	Female	500	19.0	36.0	37.3	7.8
Age	18 to 29	198	25.7	22.9	45.7	5.7
	30 to 39	194	25.0	28.8	37.5	8.8
	40 to 49	217	15.4	35.3	42.3	7.0
	50 to 59	172	19.9	42.0	31.9	6.2
	60 plus	227	21.6	33.7	36.2	8.6
Home	Own	745	21.8	31.5	39.2	7.5
	Rent	226	20.4	37.2	37.1	5.3
	Refused	37	19.7	20.3	44.6	15.4
Vote Profile	Liberal	220	21.7	31.6	40.0	6.6
	Conservative Party	277	19.1	36.3	38.4	6.2
	NDP	158	29.5	23.5	41.4	5.5
	Bloc Québécois	71	17.3	31.1	47.8	3.8
	Green Party	38	29.3	23.5	45.3	1.9
	Undecided	244	18.6	36.1	33.2	12.2



## NANOS – POLICY OPTIONS IMMIGRATION POLL

Question 2 – On a scale from 1 to 5, where 1 is do not blend at all and 5 is blend completely, how well do you think new permanent immigrants in Canada blend into their host society?

		Total	1 = Do not blend at all	2	3	4	5 = Blend completely	Unsure
		Responses	Percentage	Percentage	Percentage	Percentage	Percentage	Percentage
Region	Canada 2010-06	1008	9.2	19.8	41.5	18.3	7.9	3.4
	Atlantic	97	8.3	21.7	43.5	11.0	11.7	3.8
	Quebec	251	4.5	19.5	44.3	22.5	7.7	1.5
	Ontario	300	12.1	19.1	41.7	14.6	7.7	5.0
	Prairies	214	10.5	20.2	38.7	21.5	5.4	3.8
	British Columbia	145	10.1	19.9	38.8	18.7	9.5	2.9
Gender	Male	507	10.1	18.7	41.5	18.9	8.0	2.7
	Female	500	8.2	20.9	41.4	17.7	7.7	4.2
Age	18 to 29	198	6.7	21.0	40.0	20.0	9.5	2.9
	30 to 39	194	8.1	16.3	45.0	20.6	6.9	3.1
	40 to 49	217	10.0	18.4	42.8	16.9	9.5	2.5
	50 to 59	172	11.9	24.8	39.4	16.8	5.3	1.8
	60 plus	227	9.5	19.4	40.0	17.1	7.6	6.3
Home	Own	745	9.3	20.4	42.1	17.5	7.8	2.9
	Rent	226	8.8	19.6	39.2	20.5	7.5	4.4
	Refused	37	10.3	9.0	41.1	19.6	11.6	8.4
Vote Profile	Liberal	220	7.1	15.7	50.6	18.9	4.9	2.7
	Conservative Party	277	11.6	23.5	42.8	12.7	5.9	3.5
	NDP	158	7.9	20.6	38.3	24.6	7.5	1.1
	Bloc Québécois	71	7.4	18.0	45.7	26.8	1.1	1.0
	Green Party	38	10.1	16.3	45.6	18.1	10.0	.0
	Undecided	244	9.6	19.8	31.8	17.4	14.7	6.7



## NANOS – POLICY OPTIONS IMMIGRATION POLL

**Do you agree, somewhat agree, somewhat disagree or disagree with the following statements:  
[Rotate Question 3 – Question 7]**

		Question 3 – Immigration is a key positive feature of Canada as a country.					
		Total	Agree	Somewhat agree	Somewhat disagree	Disagree	Unsure
		Responses	Percentage	Percentage	Percentage	Percentage	Percentage
Region	Canada 2010-06	1008	65.3	16.1	4.2	11.8	2.6
	Atlantic	97	63.6	19.4	3.1	10.8	3.1
	Quebec	251	66.5	20.3	6.1	6.6	.6
	Ontario	300	65.4	16.2	4.0	12.0	2.4
	Prairies	214	63.3	12.0	3.8	15.8	5.1
	British Columbia	145	67.2	12.3	2.7	15.0	2.8
Gender	Male	507	66.4	16.6	4.3	11.3	1.5
	Female	500	64.2	15.6	4.2	12.2	3.8
Age	18 to 29	198	62.9	18.1	4.8	10.5	3.8
	30 to 39	194	73.8	13.8	3.8	6.9	1.9
	40 to 49	217	65.7	17.4	3.0	11.9	2.0
	50 to 59	172	61.5	12.4	5.3	18.6	2.2
	60 plus	227	62.9	17.8	4.4	11.7	3.2
	Home	Own	745	66.3	16.4	3.9	11.3
Rent		226	61.1	16.1	5.0	13.5	4.3
Refused		37	70.9	9.0	4.9	10.2	5.1
Vote Profile	Liberal	220	73.6	14.2	1.9	8.6	1.7
	Conservative Party	277	62.9	16.7	4.1	14.3	2.0
	NDP	158	68.5	18.4	2.8	7.2	3.1
	Bloc Québécois	71	61.1	16.0	18.0	4.9	.0
	Green Party	38	67.1	23.4	.0	9.5	.0
	Undecided	244	59.5	14.4	4.0	17.1	5.0



## NANOS – POLICY OPTIONS IMMIGRATION POLL

**Do you agree, somewhat agree, somewhat disagree or disagree with the following statements:  
[Rotate Question 3 – Question 7]**

Question 4 – Immigration is one of the key tools Canada can use to strengthen the economy.

		Total	Agree	Somewhat agree	Somewhat disagree	Disagree	Unsure
		Responses	Percentage	Percentage	Percentage	Percentage	Percentage
Region	Canada 2010-06	1008	51.8	18.5	6.6	18.9	4.2
	Atlantic	97	54.3	20.0	2.3	14.4	9.0
	Quebec	251	48.0	23.9	16.4	9.9	1.9
	Ontario	300	52.8	17.1	2.5	24.6	3.1
	Prairies	214	53.8	15.9	3.6	20.9	5.8
	British Columbia	145	51.7	15.0	5.1	23.2	4.9
Gender	Male	507	55.5	17.5	5.5	18.5	3.0
	Female	500	48.0	19.5	7.7	19.4	5.4
Age	18 to 29	198	51.4	18.1	5.7	19.0	5.7
	30 to 39	194	53.1	18.8	8.1	16.3	3.8
	40 to 49	217	51.7	17.4	7.5	19.9	3.5
	50 to 59	172	49.6	16.4	8.0	23.9	2.2
	60 plus	227	52.7	21.3	4.1	16.5	5.4
Home	Own	745	52.4	19.6	6.2	17.7	4.1
	Rent	226	49.8	15.7	8.4	22.0	4.1
	Refused	37	50.9	13.2	3.3	25.6	7.0
Vote Profile	Liberal	220	51.7	18.2	5.2	19.8	5.1
	Conservative Party	277	56.0	16.8	4.9	18.5	3.7
	NDP	158	58.6	18.3	3.8	16.6	2.7
	Bloc Québécois	71	49.8	18.1	23.6	8.5	.0
	Green Party	38	42.3	23.5	8.8	25.4	.0
	Undecided	244	44.8	20.1	6.2	22.2	6.8



## NANOS – POLICY OPTIONS IMMIGRATION POLL

**Do you agree, somewhat agree, somewhat disagree or disagree with the following statements:  
[Rotate Question 3 – Question 7]**

		Question 5 – Governments should do more to help immigrants settle (e.g. language class; labour market support, etc.).					
		Total	Agree	Somewhat agree	Somewhat disagree	Disagree	Unsure
		Responses	Percentage	Percentage	Percentage	Percentage	Percentage
Region	Canada 2010-06	1008	45.8	19.9	6.2	24.5	3.6
	Atlantic	97	47.7	25.2	3.6	20.8	2.8
	Quebec	251	53.9	23.0	8.9	13.4	.9
	Ontario	300	43.3	17.9	4.0	31.7	3.0
	Prairies	214	45.8	13.6	6.9	28.6	5.1
	British Columbia	145	35.7	24.3	6.8	25.5	7.6
Gender	Male	507	45.9	19.5	5.9	25.8	2.9
	Female	500	45.7	20.3	6.6	23.2	4.2
Age	18 to 29	198	47.6	26.7	4.8	18.1	2.9
	30 to 39	194	56.9	16.3	5.0	17.5	4.4
	40 to 49	217	38.3	21.9	8.5	27.4	4.0
	50 to 59	172	41.6	19.0	6.2	31.4	1.8
	60 plus	227	45.1	15.9	6.3	28.3	4.4
Home	Own	745	42.7	21.1	7.7	25.0	3.6
	Rent	226	56.9	17.7	2.5	20.2	2.7
	Refused	37	39.9	10.1	.0	41.7	8.4
Vote Profile	Liberal	220	44.6	22.1	3.6	27.2	2.5
	Conservative Party	277	40.0	19.9	7.2	29.0	3.8
	NDP	158	49.8	22.6	5.2	18.9	3.5
	Bloc Québécois	71	52.3	28.4	6.7	11.1	1.5
	Green Party	38	64.9	19.5	6.8	8.8	.0
	Undecided	244	45.9	13.7	7.9	27.1	5.4



## NANOS – POLICY OPTIONS IMMIGRATION POLL

**Do you agree, somewhat agree, somewhat disagree or disagree with the following statements:  
[Rotate Question 3 – Question 7]**

		Question 6 – Temporary foreign workers should enjoy the same rights as other workers (e.g. EI and workers' compensation benefits).					
		Total	Agree	Somewhat agree	Somewhat disagree	Disagree	Unsure
		Responses	Percentage	Percentage	Percentage	Percentage	Percentage
Region	Canada 2010-06	1008	55.4	15.7	5.8	19.8	3.3
	Atlantic	97	56.7	21.7	2.2	15.0	4.3
	Quebec	251	56.6	16.8	9.7	15.5	1.4
	Ontario	300	53.0	13.4	6.1	24.4	3.1
	Prairies	214	57.9	12.7	4.7	18.6	6.1
	British Columbia	145	53.9	19.0	2.4	22.8	1.8
Gender	Male	507	56.8	14.8	5.9	19.4	3.2
	Female	500	54.0	16.7	5.7	20.3	3.3
Age	18 to 29	198	53.3	21.0	2.9	19.0	3.8
	30 to 39	194	55.6	14.4	6.9	18.8	4.4
	40 to 49	217	51.7	21.4	4.5	19.4	3.0
	50 to 59	172	57.1	8.4	7.5	24.8	2.2
	60 plus	227	59.4	12.4	7.3	18.1	2.9
Home	Own	745	53.3	16.9	6.8	19.5	3.4
	Rent	226	60.5	13.2	3.3	21.2	1.8
	Refused	37	66.2	8.1	.0	17.3	8.4
Vote Profile	Liberal	220	55.4	16.5	8.0	16.0	4.1
	Conservative Party	277	51.0	16.5	4.3	25.8	2.4
	NDP	158	61.9	18.7	3.5	14.2	1.7
	Bloc Québécois	71	52.2	19.0	16.5	11.3	1.1
	Green Party	38	56.8	11.8	2.8	28.6	.0
	Undecided	244	57.0	11.9	4.2	21.3	5.7



## NANOS – POLICY OPTIONS IMMIGRATION POLL

**Do you agree, somewhat agree, somewhat disagree or disagree with the following statements:  
[Rotate Question 3 – Question 7]**

Question 7 – A Canadian citizen should be allowed to have another citizenship.

		Total	Agree	Somewhat agree	Somewhat disagree	Disagree	Unsure
		Responses	Percentage	Percentage	Percentage	Percentage	Percentage
Region	Canada 2010-06	1008	58.9	11.8	4.2	21.0	4.1
	Atlantic	97	62.1	16.0	2.2	14.2	5.5
	Quebec	251	54.2	15.1	8.0	21.0	1.7
	Ontario	300	57.5	8.0	3.1	25.7	5.6
	Prairies	214	62.2	12.0	3.3	17.3	5.2
	British Columbia	145	62.8	10.4	2.7	21.5	2.6
Gender	Male	507	56.6	11.6	4.9	23.8	3.1
	Female	500	61.2	11.9	3.5	18.3	5.2
Age	18 to 29	198	59.0	18.1	1.0	18.1	3.8
	30 to 39	194	67.5	9.4	6.3	13.1	3.8
	40 to 49	217	63.2	11.9	5.0	17.4	2.5
	50 to 59	172	52.7	11.1	3.5	29.6	3.1
	60 plus	227	52.1	8.6	5.1	27.3	7.0
Home	Own	745	58.1	11.9	4.7	21.8	3.5
	Rent	226	59.9	12.2	2.8	19.3	5.8
	Refused	37	68.7	6.5	3.3	16.4	5.1
Vote Profile	Liberal	220	63.2	9.3	3.7	20.3	3.6
	Conservative Party	277	53.5	11.9	4.4	23.8	6.4
	NDP	158	62.0	12.7	5.2	19.6	.5
	Bloc Québécois	71	57.8	8.9	7.3	25.0	1.0
	Green Party	38	69.1	8.7	2.0	18.3	1.9
	Undecided	244	57.9	14.5	3.3	18.7	5.6



NANOS

trusted insight and strategy

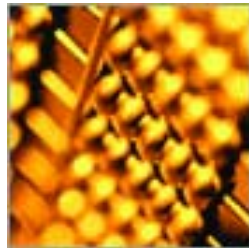
NANOS RESEARCH GROUP

Ottawa • Toronto • Montreal • Calgary • Vancouver • Halifax • Buffalo



# The Nanos Approach

At Nanos Research, we are experts at helping public-facing companies and organizations connect with the “hearts and minds” of customers or the general public. Our advantage comes from over 20 years experience in understanding the numbers and building upon them to provide strategic insight and intelligence in support of our clients’ business, marketing, public affairs and communications needs.



## Getting Started

At Nanos, we believe that small steps can lead to large insights. We are regularly in the field with a national omnibus surveys. We’ll sit down with you to learn about your challenges and work on your challenge together. The results can be used to conduct a strategic assessment of your current challenge or can be the basis of a broader mission plan for you to achieve your market or mind share objectives.

## The Right Solution for the Right Job

- Strategy Retainer
- Strategic Assessment
- Telephone Surveys
- Online Surveys
- eDeliberative Polling and Online Dialogue
- Focus Groups
- Elite in-depth interviews
- Mystery Shopping
- Management Consulting



# A Trusted Source

Our team is headed by Nik Nanos, a leader in the market and public opinion research industry recognized for the quality of his work, the insightfulness of his counsel and his professional integrity. Media organizations regularly call upon Nik Nanos and Nanos Research to capture the public pulse and analyze complex issues.



## The Nanos Research Group

Our group of companies is a national team of like-minded research professionals and organizations bound by a common commitment to quality research, quality service and superior research outcomes.



**NANOS**  
RESEARCH



**NANOS USA**



[www.jenkinsresearch.ca](http://www.jenkinsresearch.ca)



[www.thinkwellresearch.ca](http://www.thinkwellresearch.ca)



[www.justasonmi.com](http://www.justasonmi.com)



[www.zincresearch.com](http://www.zincresearch.com)



[www.tsp.ca](http://www.tsp.ca)

Contact us today for your next research or strategy project.

John Nanos, Senior Vice President  
North America Toll-free 1(888) 737-5505 ext.223  
(416) 493-1965 ext. 223  
[jnanos@nanosresearch.com](mailto:jnanos@nanosresearch.com)